

Feasibility Test of Prospective Tracking of Respiration Signals for Breathing Compensated or Gated Radiotherapy

Haisong Liu, Yan Yu, Michael Schell, Walter O'Dell, Paul Okunieff
Department of Radiation Oncology, University of Rochester, Rochester, NY 14642, USA

Abstract— Motion compensation radiotherapy systems are currently available. Signals representing moving targets can be obtained from either real-time x-ray images of implanted markers near the target or external respiration sensors. However, a time lag exists between the motion signal acquisition and action execution (moving the robotic arm). This time lag has been estimated as 0.3 s, and a typical respiratory velocity of 2-4 mm/sec results in a systematic position lag between 1 and 2 mm. In this study, the feasibility of prospective tracking of respiration signal based on autoregressive (AR) model was tested to compensate this time lag. Free breathing motion signals were acquired by an electromagnetic 3D position measurement system. The software for signal acquisition and AR model computation was developed as a visual C++ application. The signals were obtained at a frequency of 3 Hz. Original respiratory signal of T seconds (variable) was used to compute the AR model parameters. The model order was also variable. The model was updated every T seconds. The same model was used for T seconds while the input data was updated with the actual signals. The predicted positions were computed and the errors to the actual positions were computed. The position errors allowing for time lag were computed through shifting the motion signal by one time unit (~0.33 seconds). Different methods to compute the AR model coefficients were tested, among which the Burg's method has shown slightly better error reduction capability. In a typical test case, the mean absolute error was reduced from 0.8 mm to 0.25 mm for a respiratory signal of 1 min.

Keywords—Prospective tracking, AR model, radiotherapy, gated, motion compensation

I. INTRODUCTION

Motion compensated [1-3] or respiration gated [4,5] radiotherapy systems are currently available. Signals representing moving targets can be obtained from either real-time x-ray images of implanted markers near the target or external respiration sensors. However, a time lag exists between the motion signal acquisition and action execution. Previous study has shown that typical respiratory velocity of 2-4 mm/sec results in a systematic position lag between 1 and 2 mm, and a time lag of 0.3 seconds [3]. This systematic lag could be compensated by predicting motions because the regularity of breathing signals would allow for such a prediction to a limited extent in the future. The purpose of this study is to test the feasibility of the prospective tracking method to predict the future trajectory of the target based on the previous motion signals in motion-compensation or gated radiotherapy.

II. METHODOLOGY

A. Autoregressive (AR) Model

The autoregressive (AR) model [6,7] is one of the linear prediction formulas that attempt to predict an output y_n of a system based on the previous inputs ($x_n, x_{n-1}, x_{n-2}, \dots$). It is also known in the filter design industry as an infinite impulse response filter (IIR) or an all pole filter, and is sometimes known as a maximum entropy model in physics applications. The definition used here is as follows

$$y_n = \sum_{i=1}^n a_i x_{n-i} + \varepsilon_n \quad (1)$$

where a_i are the autoregression coefficients, x_i is the series under investigation, and n is the order (length) of the filter which is generally less than the length of the series. The noise term or residue, epsilon in the above, is almost always assumed to be Gaussian white noise.

Verbally, the current term of the series can be estimated by a linear weighted sum of previous terms in the series. The weights are the autoregression coefficients. The problem in AR analysis is to derive the "best" values for a_i given a series x_i . The majority of methods assume the series x_i is linear and stationary. By convention the series x_i is assumed to be zero mean, if not this is simply another term a_0 in front of the summation in the equation above.

A number of techniques exist for computing AR coefficients. The main two categories are least squares and Burg method. Within each of these there are a few variants, the most common least squares method is based upon the Yule-Walker equations. MatLab has a wide range of supported methods, including Burg's method, covariance method, and modified covariance method, respectively. We tested all of these methods, and the dependence of the predicted errors on the model order and the input data length.

B. Electromagnetic position measurement system

For the purpose of position measurement in this study, an electromagnetic (EM) position and orientation measurement system (miniBIRDTM, Ascension Technology, Inc., Burlington, Vermont) was used. An EM sensor was attached to the subject's chest and real-time position respiratory signals were acquired. An EM transmitter was mounted on a wood stand and settled about 30-40cm distance to the sensor. Both the sensor and the transmitter were connected with an electronics unit, which was connected to the computer through RS232 serial port. An in-

house C++ application program was developed to acquire the real-time respiratory signal, calculate the model, and predict the next positions. The respiratory signals were obtained at a frequency of 3 Hz. The AR model was updated every 10 seconds, and signals of 10 seconds (about 30 points) were used to compute the AR model coefficients. The model order was dependent on the method: for Burg's method, it was set as half of the data array length. The same model was used for 10 seconds while the input data array was updated with the actual signals. The predicted positions were computed. The position error of the predicted signal was computed as the average value of the absolute differences of each point pair between the original signal and the predicted signal:

$$E_{\text{predicted}} = \frac{1}{M} \sum_{i=1}^M |y_i - x_i| \quad (2)$$

where M is the total number of predicted points. The position error allowing for time lag was computed through shifting the respiration signal by one time unit (~ 0.33 seconds), and then computing the average value of the absolute differences between each point pairs of the original signal and the shifted signal:

$$E_{\text{shifted}} = \frac{1}{M} \sum_{i=1}^M |x_i - x_{i-1}| \quad (3)$$

III. RESULTS

A. Original and Predicted Respiratory Signals

A free-breathing respiration signal of a healthy volunteer has been acquired by attaching the EM sensor to his chest. About 1 min. of free breathing was recorded, and the whole series contains about 180 data points, as shown in Fig. 1. The averaged one time unit shifted error of this signal was 0.8 mm, as computed by Eq. (3). Figure 2 showed the predicted signal of the series using Burg's method. There were 30 input data points and the order was 15. The predicted error was 0.35 mm, as computed by Eq. (2)

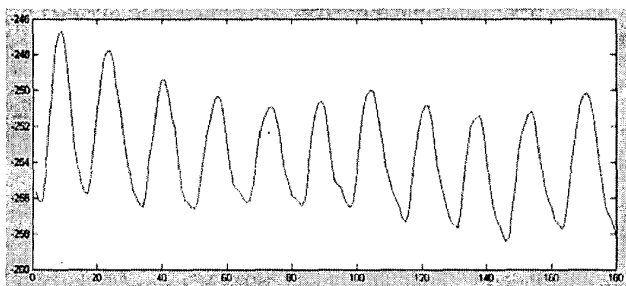


Fig. 1. The original respiratory signal (only one dimensional position was shown here and used in the study). The horizontal axis is the time unit (~ 0.33 s per point), and the vertical axis is the position in unit of mm.

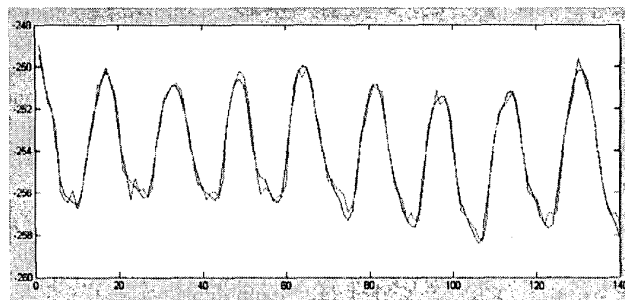


Fig. 2. The predicted signal (in red) compared with the original signal (in blue). AR model coefficient computed using Burg's method.

B. Selection of the model order

There is no straightforward way to determine the correct model order. Generally, as one increases the order of the model the average error decreases quickly up to some order and then more slowly. An order just after the point at which the RMS error flattens out is usually appropriate. Selection of the order used for compute the AR model coefficients was experimentally tested in this study, and shown in Fig. 3.

The minimum predicted errors were 0.33 mm for the Burg's method and the modified covariance method, when the orders were 10, and 0.34 mm for the covariance method when the order was 7.

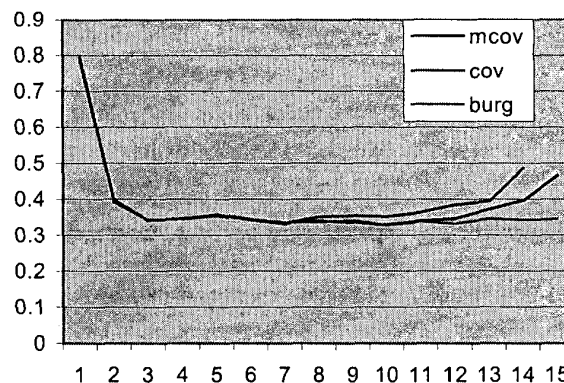


Fig. 3. Relationship between the predicted errors and the orders used to compute the AR model coefficients (30 input points were used).

C. Selection of the input data length

The relationship between the predicted errors and the number of points used as input signal was tested, by changing the input data length from 10 to 100 with the step size of 5. Four different orders were used, as defined by the fraction of the input data length, $1/2$, $1/3$, $1/4$, and $1/5$, respectively. The results were shown in Fig. 4.

The minimum predicted error was 0.25 mm when 60 data points were used and the order was 17. This test was performed using the Burg's method. The other methods

showed similar results. The minimum errors were 0.26 and 0.27 mm for the covariance and modified covariance method, respectively.

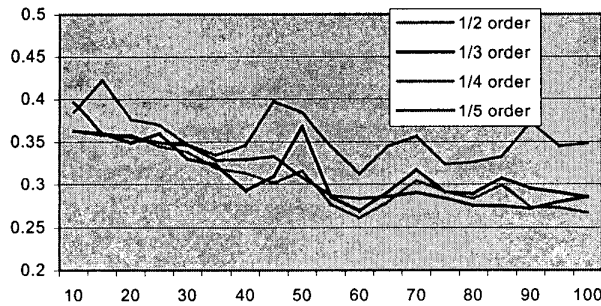


Fig. 4. Relationship between the predicted errors and the input data length used to compute the AR model coefficients (4 different orders were used).

IV. CONCLUSION

The aim of this study was to test the feasibility of prospective tracking of respiration signals based on AR model. In a typical test case, the minimum predicted error of free-breathing respiration signals of a healthy volunteer was 0.25 mm, while the shifted error allowing for time lag was 0.8 mm. The predicted error is dependent on the model order and the input data length. For this typical case, the minimum predicted error was realized when the data input length was 60 points (corresponding to 20 seconds or 3 full respiratory cycles of free-breathing of the subject), and the order was $\frac{1}{4}$ of the input data length.

In respiration-gated radiation therapy, high-energy photon beam of fixed or varying aperture and/or intensity is switched on under computer control during a desired portion of the respiratory cycle, in which movement of the target volume (tumor) is minimized. The prospective tracking model should therefore predict the locations of the peaks and valleys (end-inspiration and end-expiration) as well as the full-width at half-maximum of the real-time signals accurately. As shown in Fig. 2, the present study established the feasibility of using the AR model to achieve this goal.

Additional tests will be performed in the near future, including (a) test signals from different positions on the torso (e.g. different parts of the chest and abdomen); (b) introduce "shock" to the respiration signal (sudden change in breathing pattern); and (c) introduce "trend" using an auto-regressive moving average model (e.g., fast then relaxing, or slow-fast-slow). These refinements to the basic model may better account for realistic clinical situations in radiotherapy with the patient under treatment.

The validity and efficacy of the refined prospective tracking model will be investigated in a future clinical study in which respiratory signals obtained from patients under radiotherapy treatments are acquired and used to assess its

accuracy.

This method can be used to predict motion of the tumor if the tumor movement signal is acquired in real-time using orthogonal x-ray sources and detectors.

REFERENCES

- [1] C. Ozhasoglu, M.J. Murphy, G. Glosser *et al.*, Real-time tracking of the tumor volume in radiotherapy: A novel approach to compensate for respiratory motion. In: *Proc. 14th Int. Conf. on Computer Assisted Radiology and Surgery*, Elsevier Science BV, Amsterdam (2000), pp. 691-696 (CARS 2000, San Francisco, CA).
- [2] P.J. Keall, V.R. Kini, S.S. Vedam *et al.*, Motion adaptive x-ray therapy: A feasibility study. *Phys Med Biol* **46** (2001), pp. 1-10.
- [3] A. Schweikard, G. Glosser, M. Bodduluri *et al.*, Robotic motion compensation for respiratory movement during radiosurgery. *Comput Aided Surg* **5** (2000), pp. 263-277.
- [4] H.D. Kubo and B.C. Hill, Respiration gated radiotherapy treatment: A technical study. *Phys Med Biol* **41** (1996), pp. 83-91.
- [5] H.D. Kubo, P.M. Len, S. Minohara and H. Mostafavi, Breathing-synchronized radiotherapy program at the University of California Davis Cancer Center. *Med Phys* **27** (2000), pp. 346-353.
- [6] S. M. Kay, *Modern Spectral Estimation: Theory and Application*. Englewood Cliffs, NJ: Prentice-Hall, 1988.
- [7] S. L. Marple, Jr., *Digital Spectral Analysis with Applications*. Englewood Cliffs, NJ: Prentice-Hall, 1987.